



POSTEK

RUGGED PARTS, DURABLE MACHINES

Open

Close

ZX Series

TOUCH SCREEN LABEL PRINTER



STYLE BEYOND LIMITS, PERFORMANCE BEYOND EXPECTATIONS.

The ZX series comes equipped with many of the new exciting features that you would expect for a POSTEK printer. Combined with the powerful quad core processor, you can easily achieve stunning printout quality with the brand new HEAT™

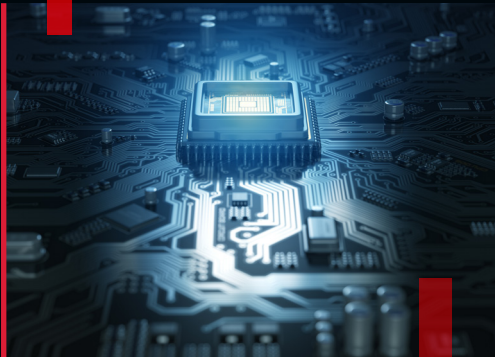
algorithm. Now you can easily do all those things and more with the inclusion of a 4.5 inch LCD touch screen display. Enjoy the full power of the ZX series right your fingertips.

99812389992374 99812389992374 99812389992374

MULTI-INTERACTIVE & SMART PRINTING

Overview

In our increasingly connected world, individual devices have gotten smarter and smarter to make lives easier. POSTEK printer is certainly no different. Being the first to embrace a software architecture that breaks the traditional mold. POSTEK printers are no longer just a part of the printing process, but the brains of the whole operation. From advanced custom software capabilities like accessing cloud databases from the printer directly, to onboard logic controllers removing the need for external PLC/additional programming, to the powerful four-core processor enabling real-time visual verification without any external hardware, the advanced multi-interactive smart printers from POSTEK can bring about unparalleled boost to convenience and efficiency.

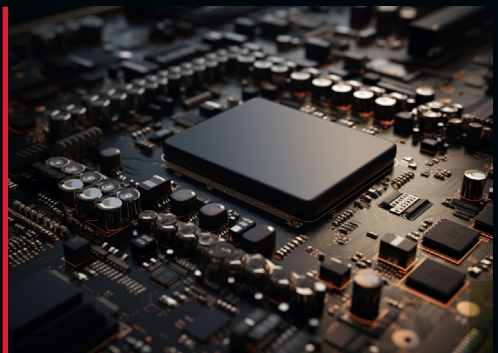


Performance built-in

The ZX series features an industry-leading four-core 1.8GHz MPU and a powerful GPU with 2D/3D graphics hardware acceleration. Providing ample processing power for consistent, high-demand print jobs as well as extensively customized software applications.

Built it, Store it, Run it

With more than 1G of RAM and 8G of flash, the ZX series allows for never-before-seen use cases where the printer not only handles the majority of the processing, but data storing as well. Easily store tens of thousands of data files like Excel, label templates, fonts, and graphics directly on the printer, and print away with just a few taps on the printer's screen.



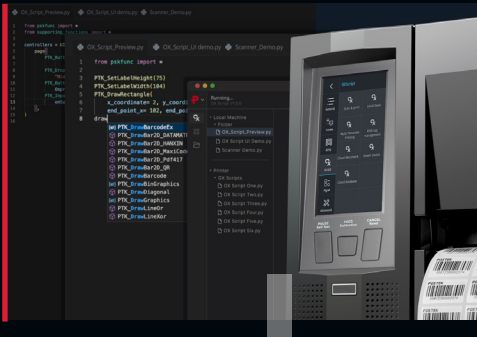


Cuts the Cords, Connect the Freedom

Ditch the tangle of cords and revel in the freedom offered by the integrated Bluetooth/Wi-Fi module. Seamlessly connect to and oversee your printer ensemble from any location that suits you. Streamline your workflow and take control without being physically tethered to the printers.

OX Script (Optional)

Printing without a computer have been possible for a few decades. However, it requires a pre-made templates to be stored on the printer and the template only have one or two parameter that can be modified in real time. With OX script, a POSTEK scripting language based off of python, templates are a thing of the past. Based on various pre-set conditions and requirements, every element of every label in every print job can be different from the one before it and the one after it. Who sets the conditions then? You may ask, and the answer is you do. OX scripts give you the freedom and flexibility to fully customize the printing script to best fit your needs.

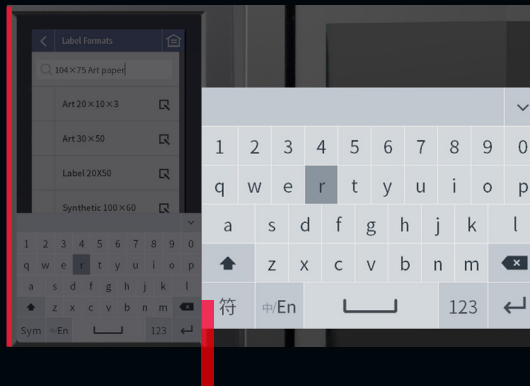


OX Script, the new standard of customization

Through OX Script (Optional), one can easily create complex and extensive custom software for the printer. Enabling use cases never before seen. From reading/writing to cloud databases directly from the printer, accessing files stored locally on the printer, and creating User Interfaces specific to the application, OX Script offers an unprecedented level of freedom and customization. Breaking free of the requirement of a PC for complex use cases.

One Screen to do it all

Equipped with a 4.5-inch colored touch screen and a user-friendly interface, printing can be started directly using the printer's screen. The big screen also allows for an incorporated keyboard, making it easy for real-time user input.



FEATURES

HEAT™



HEAT™ Technology

Powered by one of the most advanced quad-core applications processors, the POSTEK OX series printer takes full advantage of the cutting-edge HEAT™ printing technology, providing the best in class printout qualities. Combined with a 4.5-inch touchscreen control panel and a number of new mechanical innovations, the OX series printer unveils a brand-new user experience unparalleled in the on-demand label printing industry.



Fixed print Engine Frame

A unique, patented aluminum print engine frame underpins the ZX series printer, along with a new all-metal structure, to deliver unparalleled stability and durability for the industrial-grade equipment with uncompromised convenience of consumables loading.



Optimal Ribbon Tension Adjustment Scheme

This patent-pending, user-friendly method has brought unprecedented simplicity and convenience. Through the Allen wrench bundled with the printer, you can easily finetune the ribbon tension with minimal training or prior experiences.



One core, Two sizes

The ZX series features a built-in media tension system for the best media positional accuracy as well as consistency. However, to achieve this level of accuracy and consistency, the media needs to fit tightly onto the media core. That is why the ZX series comes with an adaptive media core that can be easily adjusted to fit the vast majority of media on the market.



SPECIFICATIONS

Model	ZX2	ZX3
Model with RFID	ZX2r	ZX3r
Print Mode	Direct Thermal and Thermal Transfer	
Print Resolution	203 dpi	300 dpi
Max Print Speed	10 ips (254 mm/s)	8 ips (203.2 mm/s)
Max Print Width	4.25" (108 mm)	4.16" (105.7 mm)
Max Print Length	79" (2000 mm)	59" (1500 mm)
Multicore Processor	1.2 GHz Dual Logic Processor CPU + 600 MHz MCU	
Memory	512MB DDR3 RAM, 8GB managed NAND flash	
HEAT™ Level *	I	
RFID Encoder	Supports UHF EPC Gen 2, ISO 18000-6C protocols (Only available for RFID models)	
Media Roll	Maximum Media Width: 4.56" (116 mm) Minimum Media Width: 0.39" (10 mm) Maximum Outer Diameter: 8" (203.2 mm) Inner Diameter: 1.5" (38 mm) / 3" (76.2 mm)	
Minimum Label Length	Tear-off: 0.2" (5 mm)	
	Cutter: 0.79" (20 mm)	
Media Thickness	0.0024" ~ 0.0098" (0.06 ~ 0.25 mm), including liner	
Ribbon	Maximum Ribbon Length: 1968' (600 m) Maximum Ribbon Width: 4.65" (118 mm) Maximum Outer Diameter: 3.31" (84 mm) Inner Diameter: 1" (25.4 mm) Ink side: both In and Out	
Media Sensor	Upper reflective: detects black marks on print side Lower reflective: detects black marks on back side Transmissive: detects gaps, notches, holes	
Fonts	Five built-in dot matrix fonts, which include Basic Latin and Latin-1 Supplement character sets. Two built-in scalable fonts. One supports Latin, Greek and Cyrillic scripts, and the other is a GB2312 Chinese character set specifically. User downloadable TrueType fonts.	
Barcode Types	1D Barcodes: Code 39, Code 93, Code 128/subset A,B,C, Codabar, Interleave 2 of 5, UPC A/E 2 and 5 add-on, EAN-13/8/128, UCC-128, GS1-128, etc. 2D Barcodes: MaxiCode, PDF417, Data Matrix, QR Code, GS1 DataMatrix, GS1 QR Code, CS Code, etc.	
Interfaces	RS-232 Serial, 10/100/1000Mbps Adaptive Ethernet, USB DEVICE 2.0, USB HOST	
LCD Display	4.5" LCD Capacitive Touchscreen	
Power Source	100 ~ 240 V AC, 50/60 Hz	

Weight	33.07 lbs (15 kgs)
Dimensions	W 11.3" (286 mm) x D 17.6" (448 mm) x H 10.7" (271 mm)
Operating Environment	Temperature: 32°F ~ +104°F (0°C ~ 40°C) Relative humidity: 5% ~ 90% non-condensing Maximum Altitude: 5000 m
Storage Environment	Temperature: -40°F ~ +140°F (-40°C ~ 60°C) Relative humidity: 5% ~ 90% non-condensing

* HEAT™, or Heating Equilibrium Adaptive Tuning, is a POSTEK designed and developed cutting-edge technology that sets the benchmark for heat management in thermal printing. Printers equipped with HEAT™ have significant improvements in their printout clarity and print speed. The HEAT™ level represents the fineness of the heating uniformity with level I being the finest.

Optional Configuration

OX Script Engine*	OX Script is a Python-based custom printing script development kit.			
Wireless Module*	WIFI IEEE 802.11a/b/g/n/ac/ax, 2.4/5.8GHz, Bluetooth 5.0			
Cutters	Type	Rotary Cutter		
	Model	A150S	A400S	A400P
	Max. Cut Width	120 mm	120 mm	120
	Min. Cut Length	20 mm	20 mm	20 mm
	Cut Speed	0.8 sec/cut	0.8 sec/cut	0.15 sec/cut
	Cut Thickness (white cardboard paper)	0.20 mm	0.20-0.35 mm	0.35 mm
	Cut Through Adhesive	Yes	Yes	Yes
	Cuts Guaranteed	600,000	600,000	600,000

* Factory dependent.

